

INTRODUCING

ENDOSKELETON® TO

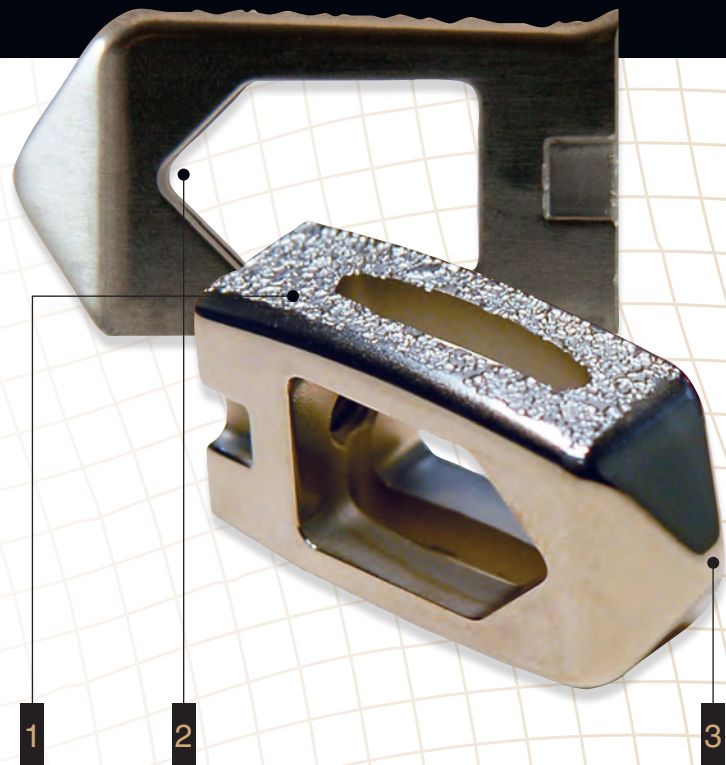
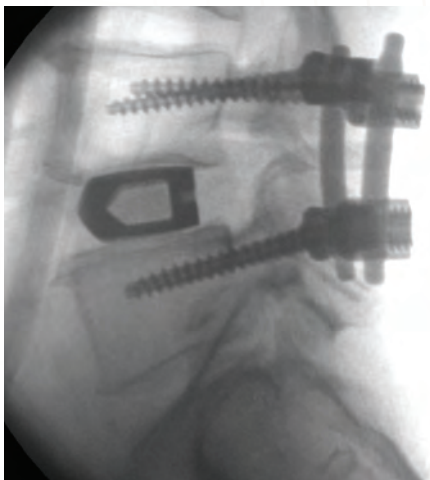
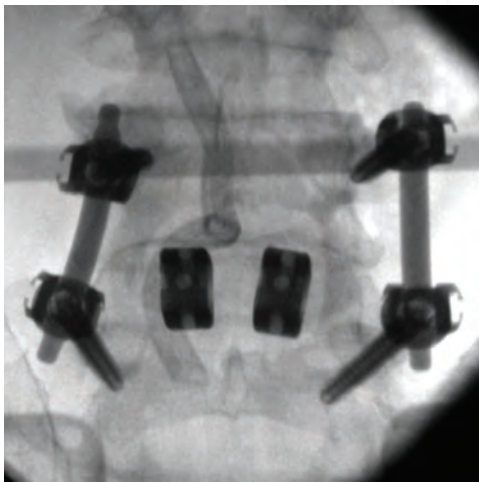
Posterior Interbody Fusion Device for the Lumbar Spine

PLIF 0° CONVEX

PLIF 4° LORDOTIC

OBLIQUE 0° CONVEX

The Interbody Device that
Participates in the Fusion Process



1] Fixation to Bone by Acid-Etched Titanium Surface

Dual Acid-Etched Titanium surface provides a strong press fit and bony ingrowth. Binding to bone with mechanical friction and a biochemical bond.

2] Large Open Area for Bone Graft

Windows allow for significant bone graft packing and outstanding radiographic visualization.

3] Easy, Straightforward Surgical Technique

Smooth leading nose and edges allow for easy insertion. Ten different sizes to accommodate patient's individual anatomy.

Surgical Technique

Perform a transforaminal approach to the lumbar spine.

The annulus is identified and a rectangular portion of annulus is incised and removed. Perform a complete discectomy and expose bleeding punctuate bone of the superior endplate of the interior vertebra and the inferior endplate of the superior vertebra.

Using the implant trials, establish the correct height and footprint of the implant to be used. The implant chosen is recommended to be the same height as the last trial used.

Fill the implant with bone graft material.

Assemble the implant to the implant inserter.

Place the implant loaded with bone graft into the disc space. If necessary adjust the position of the implant using the impaction instrument.

In order to stabilize the construct, supplemental fixation such as a plate or screw-rod based system must be applied.



Implant Holder



Endo TO Trial



Shaver

Endoskeleton® TO Device Sizes

OBLIQUE 0° CONVEX

3110-3108 / 8 mm

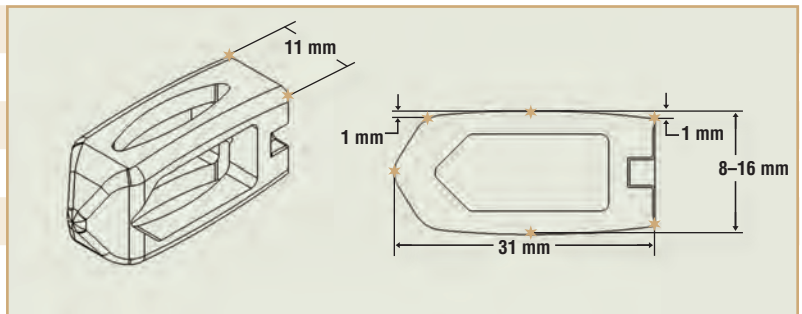
3110-3110 / 10 mm

3110-3112 / 12 mm

3110-3114 / 14 mm

3110-3116 / 16 mm

31 mm (ML) × 11 mm (AP), 0° Convex



PLIF 0° CONVEX

3110-2208 / 8 mm

3110-2210 / 10 mm

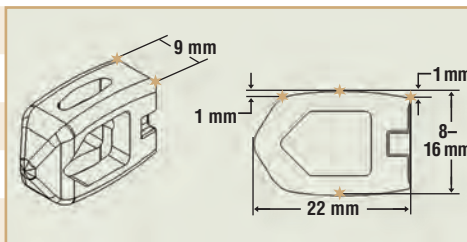
3110-2212 / 12 mm

3110-2214 / 14 mm

3110-2216 / 16 mm

22 mm (AP) × 9 mm (ML), 0° Convex

Standard



PLIF 4° LORDOTIC

3114-2208 / 8 mm

3114-2210 / 10 mm

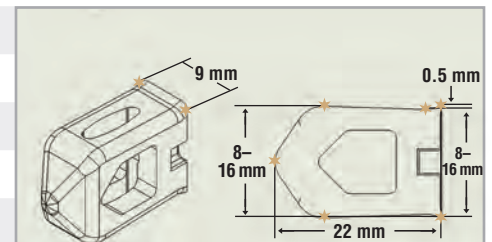
3114-2212 / 12 mm

3114-2214 / 14 mm

3114-2216 / 16 mm

22 mm (AP) × 9 mm (ML), 4° Lordotic

Standard



Large

3110-2608 / 8 mm

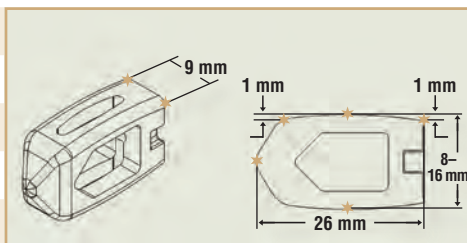
3110-2610 / 10 mm

3110-2612 / 12 mm

3110-2614 / 14 mm

3110-2616 / 16 mm

26 mm (AP) × 9 mm (ML), 0° Convex



3114-2608 / 8 mm

3114-2610 / 10 mm

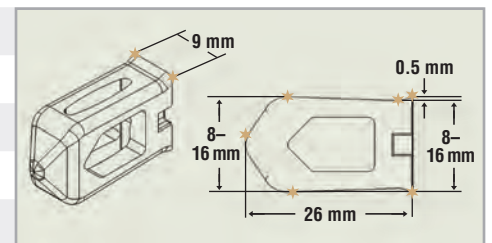
3114-2612 / 12 mm

3114-2614 / 14 mm

3114-2616 / 16 mm

26 mm (AP) × 9 mm (ML), 4° Lordotic

Large



Titan Spine
Mequon Research Center
6140 W. Executive Drive
Mequon, WI 53092
(866) 822 7800

www.titanspine.com